

# C60-80



IC-PNEUMATIC LPG / DIESEL  
PNEUMATIC OR SOLID TYRES  
6.000 / 7.000 / 7.500 / 8.000 KG



**CLARK**<sup>®</sup>



- Two foot steps with traction plates quickly and safely make entry / exit easy from either side.

- The spacious operator compartment includes an easy to read colour display. Real time information including error codes for the transmission and engine are shown in the LCD display.



**Highly Manoeuvrable, Easily Serviceable, Broadly Flexible, Extremely Dependable**

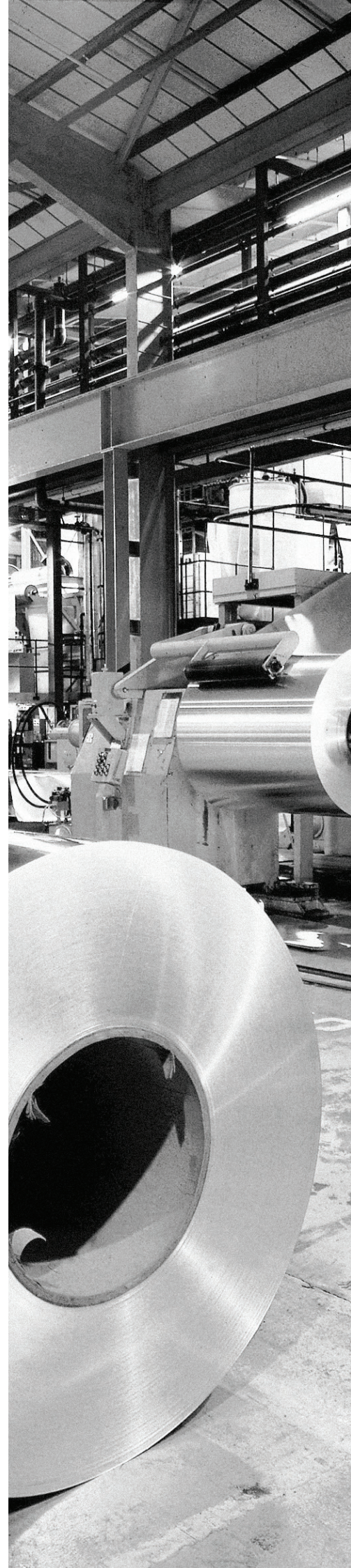
With the combination of a 67 kW diesel engine, fully automatic 3-speed transmission, wet disc brakes and rugged chassis design, the GEN2 C60-80 provides the exceptional performance, manoeuvrability and durability in its class that you've come to expect from CLARK.

# 8 metric 8 tons

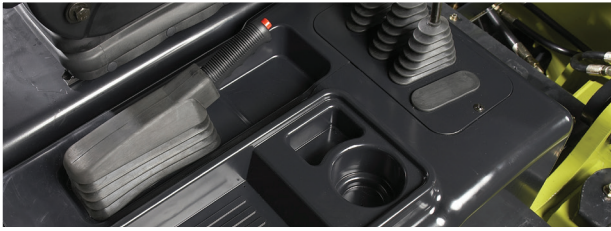
With a capacity of up to 8.000 kg the CLARK C60/70/75/80 is all the truck you will ever need.

- Nested Upright Rails, Overhead Guard Safety Bars (running parallel to operator's line of sight) and dual primary cylinders with no center cylinder expand the vision window and reduce product damage.

**Maximum Visibility + Minimum Fatigue =  
Ultimate Safety & Maximum Productivity**



# C60-80 STANDARD FEATURES & BENEFITS



## PARKING BRAKE

- **Simple & Error Proof**
  - Hand operated parking brake activates brakes.
  - Transmission disengages when parking brake is set preventing driving against park brake.

## WET DISC BRAKES ON ALL C60-80 MODELS

- **Enclosed & Oil Cooled**
  - For smooth, quiet operation.
  - Reduced maintenance.
- **Power Assist Design**
  - Low pedal effort reduces operator fatigue.
- **No Adjustments**
  - Longer Service Intervals mean less downtime.



LPG Engine

Deutz Diesel Engine

## THE POWER BEHIND THE PUNCH

- **Field-Proven PSI 4.3 I LPG Engine**
  - Provides smooth, quiet operation.
  - Optional LPG tier 4 version complete with 3 way muffler.
- **3.6 I Deutz Diesel Engine (55,4 kW) - meets all EU exhaust gas emission ( Stage IIIB ) .**
  - Low maintenance. A Complete new developed engine with high peak torque. With the installed DVERT®Oxidation Catalyst (DOC) there is no machine downtime. The exhaust after treatment is done during the operation. Alternative DPF Systems with DPF (Diesel-Particle-Filter) require a regeneration process, which means truck downtime during the operation.
- **Auto Shut-Down**
  - Protects your investment in the event of low engine oil pressure, excessive engine coolant or high transmission oil temperatures.
- **CE Compliant**
  - Engines meet reduced emission and smoke levels.
- **4.5 I Turbo Charged 67 kW Iveco Diesel Engine**
  - For non EU diesel engine emission regulation countries
  - Provides exceptional output, torque

## Optional Equipment

- Wide range of upright options
- Double auxiliary valve
- Double hose adaptation
- Integral sidershifters
- Integral fork positioners
- Fork options
- Strobe lights
- Full comfort operator cab
- Air conditioner
- Solid pneumatic tyres
- Horizontal exhaust on Diesel
- Quick-Couplings
- Varius seat option



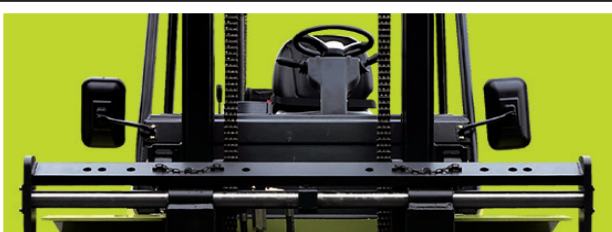
## "BUILT TO LAST®" CHASSIS

- Heavy duty, welded, integral box frame assembly.
- Integral hydraulic & fuel tanks.
- Wrap-around side frame members for rigidity.
- Integral battery & tool box compartments.



### OPTIONAL OPERATOR CAB

- **Maximum Visibility**
  - Unique overhead guard design maximizes the visibility without obstruction of door pillars.
- **180° Fold & Lock Doors**
  - Door recesses within truck frame when locked open.



### RUGGED UPRIGHT AND CARRIAGE

- **Maximum Visibility**
  - Lift cylinders, chains & hoses are all mounted within the rail profile.
- **Hydraulic Cushioning Valves**
  - Silent staging reduces shock & vibration.
- **Shimmable, Sealed & Canted Load Rollers**
  - Carriage has 8 rail rollers & 4 side thrust rollers.
  - Maximize load distribution & reduce free play.



### "SMART SHIFT" TRANSMISSION

- **Fully Automatic**
  - 3-Speed Powershift Transmission is standard on LPG & Diesel models.
  - Operator friendly, automatic upshifting and downshifting.
- **Modulated Shift Protection**
  - Smooth engagement, cushioned shifting.
- **Electrically Controlled**
  - No adjustments required.
- **Heavy Duty**
  - Robust components for longer life.
- **Inching Valve**
  - With Left Brake Pedal operation allows for precisely controlled travel speeds during high speed lifting.



### OPERATOR COMPARTMENT

- **Fully Adjustable, Full Suspension Seat**
  - 6 cm Vertical Travel • 20° Backrest Adjustment Range
  - 15 cm fore / aft adjustment • Molded for support
  - Retractable Seat Belt
- **Thick Molded Floor Mat**
  - Reduces vibration and noise level.
  - Improves operator comfort.
- **Protected Lights**
  - Headlights, Brake & Taillights and Turn Signals are mounted high to prevent damage.
- **Tilt Steering Column**
  - Adjusts to suit operator & easier entry / exit.
- **Hood Mounted Hydraulic Controls**
  - Located and sized for ease of use.



***Over 102 countries.***

**Represented by 350  
dealers.**

**At over 500 Locations**

**The best choice for:**

- Total cost of ownership
- Maintenance costs
- Value for money
- Value retention
- Purchase price

**And don't forget ...**

**You bought the original ...**

**Keep it that way ...**

**We are focusing on providing  
excellent off-the-shelf  
availability of genuine CLARK,  
quality parts, quick response  
time and competitive pricing.**

Note: "Photos and illustrations are based on information at time of printing and are subject to change without notice. Some products may be shown with optional equipment."

- We don't just build forklifts. As a company, we are also focused on providing our customers with the best possible technical service support and aftermarket parts available.
- Even though our business starts with a quality, cost effective product, our organization understands that it is the support and service that help keep your business running at peak efficiency.
- **THE CLARK PartsPRO® SYSTEM** is our industry-leading electronic parts and service documentation tool that provides dealers with a quick and accurate method of identifying parts for every CLARK forklift built since 1961. PartsPRO® ensures the availability of the most current technical information and has the unique capability to create parts manuals specific to your mixed CLARK fleet, making it simple to positively identify and order the correct part(s) from your local CLARK dealer. The right CLARK part - The First Time, Every Time.



**DEPENDABLE PARTS = DEPENDABLE TRUCKS**





## 100 YEARS OF MATERIAL HANDLING INNOVATION

A Centennial is an important milestone which not only celebrates longevity, but testifies to the strength of the CLARK brand across generations. This is reflected in the more than one million forklifts manufactured by CLARK Material Handling Company over the past 100 years. Even more powerful than the number of trucks built is the company's legacy of innovation. It began in 1917 when employees of CLARK Equipment Company constructed a simple three-wheeled shop buggy to haul sand and castings between buildings at their Buchanan, Michigan plant. The "Trutractor", as the shop buggy was named, became the first internal combustion material handling truck and was a great success. The industrial truck was



born and in the process CLARK developed the first forklift with hydraulic lifting. Through the years, many extraordinary inventions followed, among them the nested I-beam upright, overhead guard and operator restraint system. The founding principles of Eugene B. Clark are still true: "Always strive to build the best - "good enough" should not be the goal." The company always has its eye on the future and continues to build on technologies and trends to drive materials handling technology worldwide.

One Purpose, One Brand,  
One Legacy, One Century.



### CLARK EUROPE GmbH

Dr.-Alfred-Herrhausen-Allee 33  
47228 Duisburg / Germany  
Tel: +49 (0)2065 499 13-0 · Fax: +49 (0)2065 499 13-290  
Info-europe@clarkmheu.com · www.clarkmheu.com

C60/70/75/80

PRINTED IN GERMANY

© 2018 CLARK EUROPE GmbH

B0612E